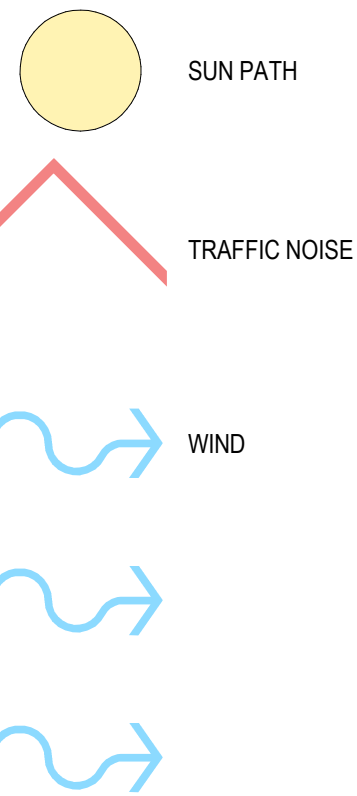


SITE ANALYSIS KEY



AMENDMENTS		
ISSUE	DESCRIPTION	APPROVED DATE
1	PRELIMINARY FOR DA	EJ 14/01/2019
2	CONSULTANT COORDINATION	FS 18/01/2019
3	CONSULTANT COORDINATION	MA 13/02/2019
4	ISSUE FOR LAHC REVIEW	MA 21/02/2019
5	FINAL REVIEW FOR DA	MA 28/02/2019
6	ADDITIONAL INFO	MA 19/02/2020

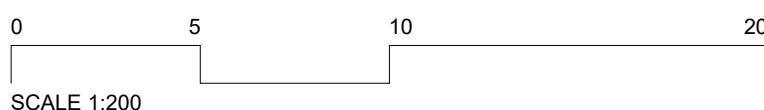
50mm on original

THIS DRAWING ISSUE HAS BEEN REVIEWED FOR

DEVELOPMENT APPLICATION

APPROVED BY: APR  
CHECKED BY: CHK

CONCEPTS AND INFORMATION CONTAINED IN THIS DRAWING ARE COPYRIGHT AND MAY NOT BE REPRODUCED IN WHOLE OR PART OR BY ANY MEDIUM, WITHOUT THE WRITTEN PERMISSION OF JACKSON TEECE. DO NOT SCALE THIS DRAWING. USE FIGURED DIMENSIONS ONLY. VERIFY ALL PROJECT DIMENSIONS BEFORE COMMENCING ON-SITE WORK OR OFF-SITE FABRICATION. NOTIFY JACKSON TEECE OF ANY DISCREPANCIES AND SEEK INSTRUCTIONS.



bluesox

CLIENT  
Bluesox Developments

SITE PLAN

DATE  
06/02/16  
PROJECT No.  
2017134

SCALE @ A1  
As indicated  
DISCP. A  
DRAWING No.  
DA-002

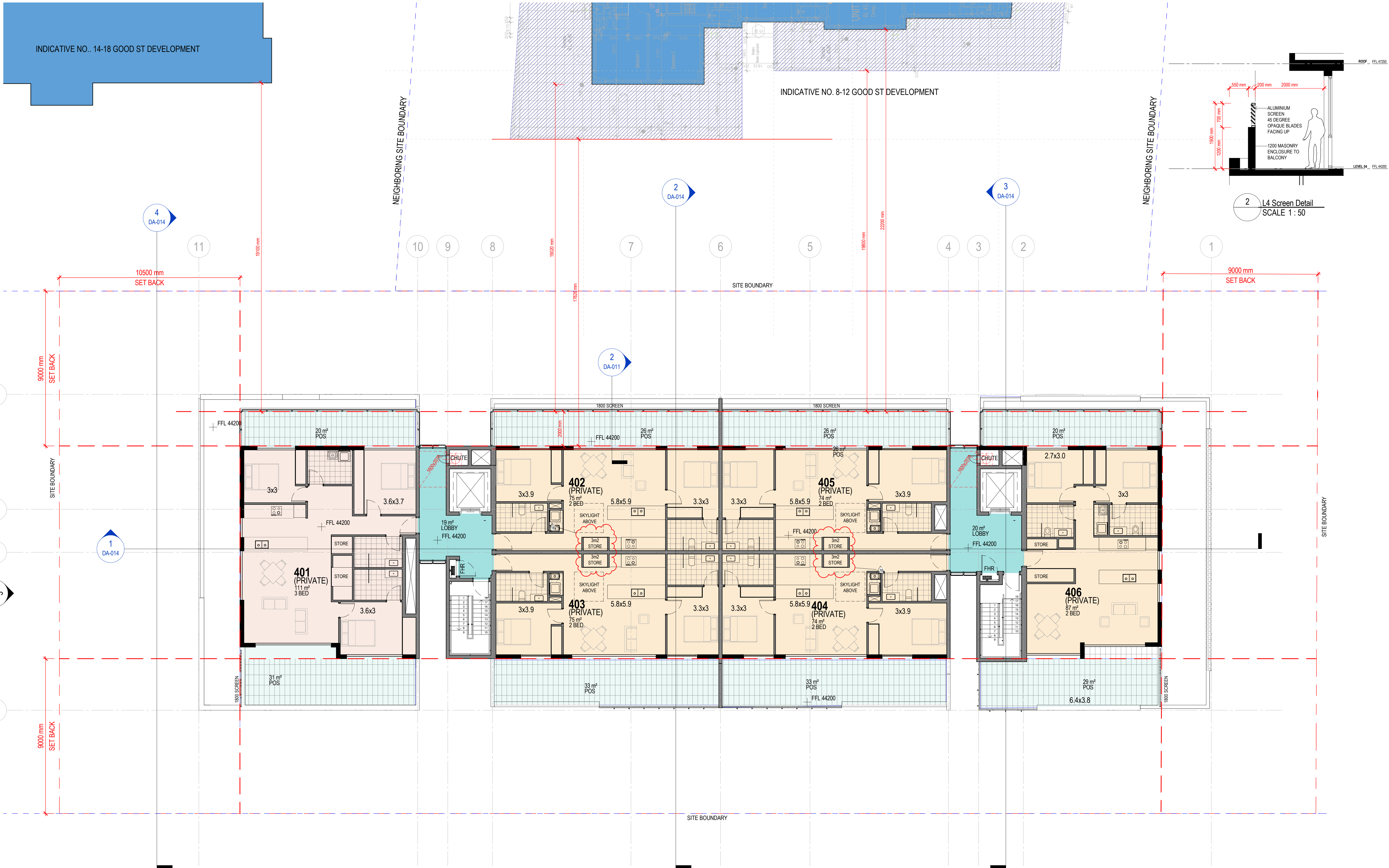
DRAWN  
MA/FS  
ISSUE  
6

PROJECT  
11-17 JOYNER  
STREET, WESTMEAD

Lot 1, Pier 8-9, 23 Hickson Road  
Walsh Bay New South Wales 2000 Australia  
T 61 2 9290 2722 F 61 2 9290 1150  
E sydney@jacksonteece.com  
Jackson Teece Chesterman Willis Pty Ltd  
Trading as Jackson Teece  
ABN 15 083 837 290  
Nominated Architects: Damian Barker (8192), John Gow (6790), Daniel Hudson (8316)

JACKSON TEECE





AMENDMENTS		
ISSUE	DESCRIPTION	APPROVED - DATE
6	PRELIMINARY FOR REVIEW	PH 19/10/2018
7	PRELIMINARY FOR REVIEW	PH 25/10/2018
8	PRELIMINARY FOR PRE-DA	PH 26/10/2018
9	PRELIMINARY FOR PRE-DA	PH 02/11/2018
10	PRELIMINARY FOR DA	EJ 14/01/2019
11	CONSULTANT COORDINATION	FS 18/01/2019
12	CONSULTANT COORDINATION	FS 24/01/2019
13	CONSULTANT COORDINATION	FS 01/02/2019
14	CONSULTANT COORDINATION	MA 13/02/2019
15	ISSUE FOR L4H REVIEW	MA 21/02/2019
16	FINAL REVIEW FOR DA	MA 28/02/2019
17	ADDITIONAL INFO	MA 17/01/2020
18	ADDITIONAL INFO	MA 19/02/2020
19	ADDITIONAL INFO	MA 28/02/2020

50mm on original

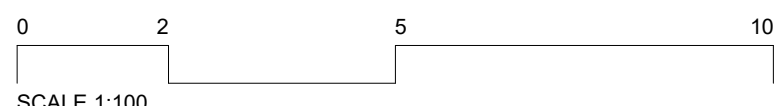
THIS DRAWING ISSUE HAS BEEN REVIEWED FOR

## DEVELOPMENT APPLICATION

APPROVED BY: GA CHECKED BY: PH

CONCEPTS AND INFORMATION CONTAINED IN THIS DRAWING ARE COPYRIGHT AND MAY NOT BE REPRODUCED IN WHOLE OR PART BY ANY MEDIUM, WITHOUT THE WRITTEN PERMISSION OF JACKSON TEECE. DO NOT SCALE THIS DRAWING. USE FIGURED DIMENSIONS ONLY. VERIFY ALL PROJECT DIMENSIONS BEFORE COMMENCING ON-SITE WORK OR OFF-SITE FABRICATION. NOTIFY JACKSON TEECE OF ANY DISCREPANCIES AND SEEK INSTRUCTIONS.

SCALE 1:100



bluesox

CLIENT  
Bluesox Developments

FLOOR PLAN - LEVEL 04

DATE  
13/09/18

PROJECT No.  
2017134

SCALE @ A1  
As indicated

DISC. DRAWING No.  
A DA-011

DRAWN  
PH

ISSUE

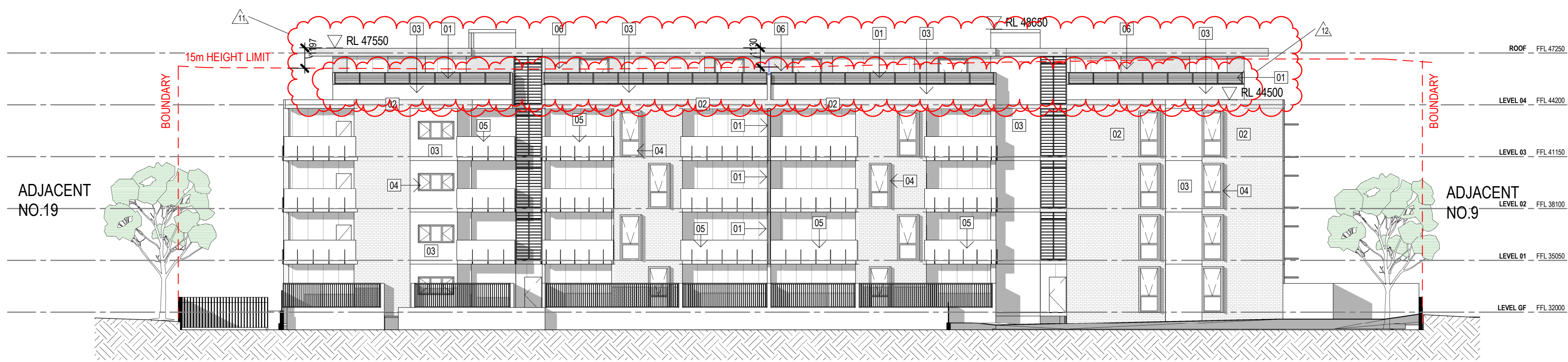
19

PROJECT  
11-17 JOYNER  
STREET, WESTMEAD

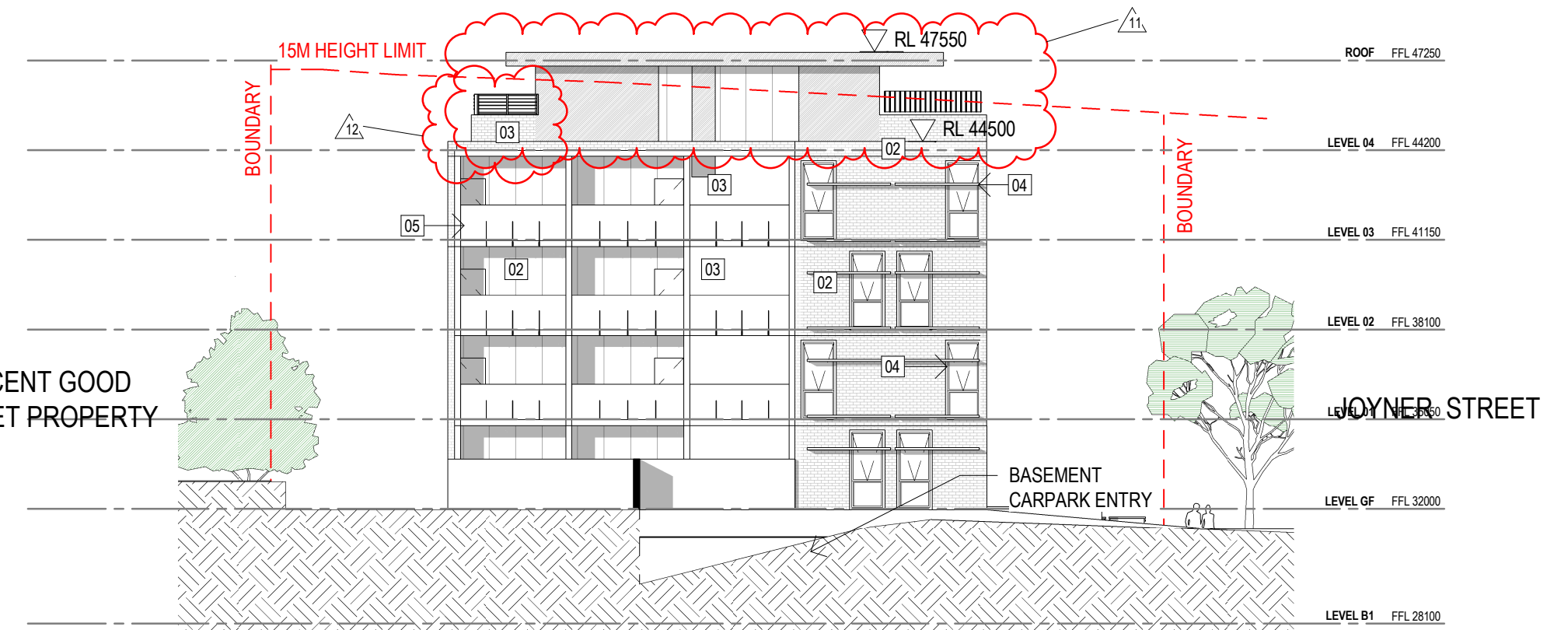
Lot 1, Pier 8-9, 23 Hickson Road  
Walsh Bay New South Wales 2000 Australia  
T 61 2 9290 2722 F 61 2 9290 1150  
E sydney@jacksonteece.com  
Jackson Teece Chesterman Willis Pty Ltd  
Trading as Jackson Teece  
ABN 15 083 837 290  
Nominated Architects: Damian Barker (8192), John Gow (6790), Daniel Hudson (8316)

**JACKSON TEECE**

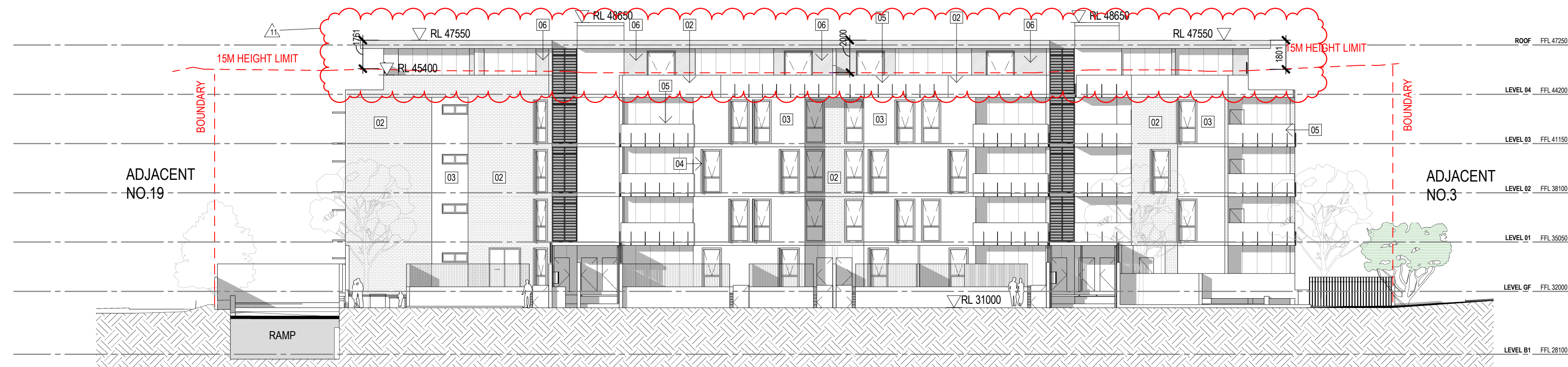




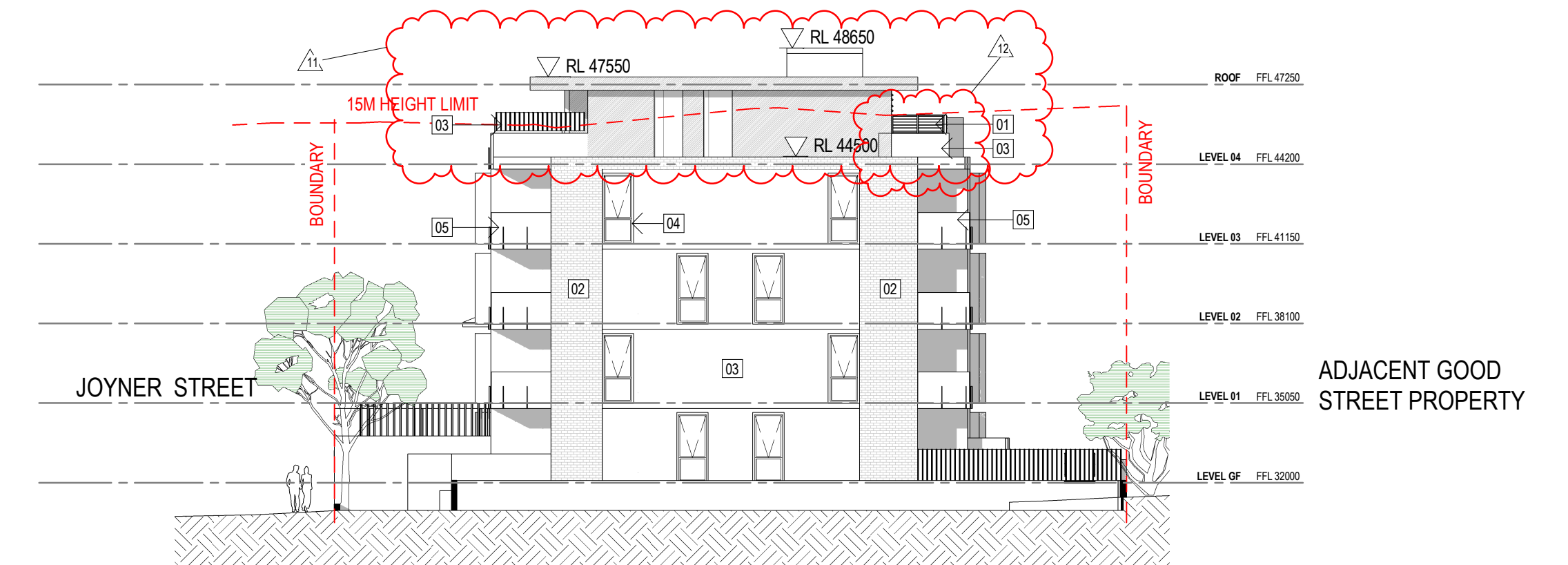
1 ELEVATION - EAST  
SCALE 1:200



3 ELEVATION - NORTH  
SCALE 1:200

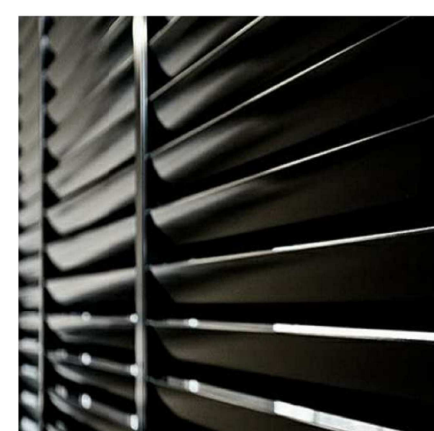


2 ELEVATION - WEST  
SCALE 1:200

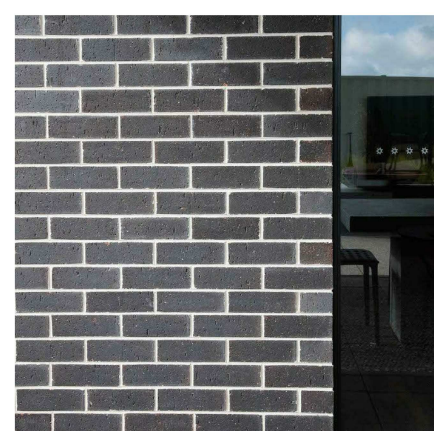


4 ELEVATION - SOUTH  
SCALE 1:200

#### MATERIAL LEGEND



01. ALUMINIUM PRIVACY  
SCREENS/LOUVRES



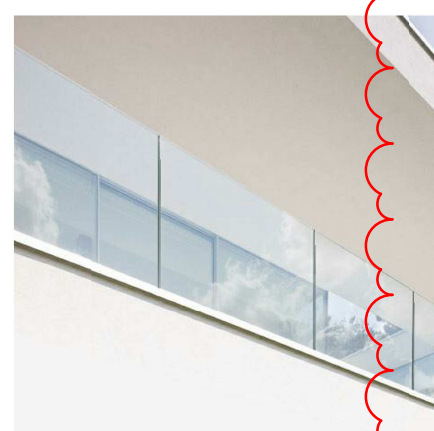
02. FACE BRICK



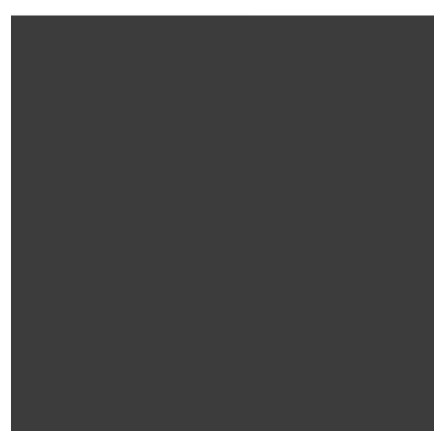
03. RENDERED  
BLOCKWORK



04. POWDERCOATED  
WINDOW FRAMES



05. GLAZED  
BALUSTRADE



06. RENDERED BLOCKWORK TO  
TOP LEVEL - DARK RECESSIVE  
COLOUR.  
DULUX WAYWARD GREY NOM.

AMENDMENTS		
ISSUE	DESCRIPTION	APPROVED - DATE
1	PRELIMINARY FOR REVIEW	PH 19/10/2018
2	PRELIMINARY FOR PRE-DA	PH 26/10/2018
3	PRELIMINARY FOR PRE-DA	PH 02/11/2018
4	PRELIMINARY FOR DA	EJ 14/01/2019
5	CONSULTANT COORDINATION	FS 19/01/2019
6	CONSULTANT COORDINATION	FS 24/01/2019
7	CONSULTANT COORDINATION	FS 01/02/2019
8	CONSULTANT COORDINATION	MA 13/02/2019
9	ISSUE FOR LAHC REVIEW	MA 21/02/2019
10	FINAL REVIEW FOR DA	MA 28/02/2019
11	ADDITIONAL INFO	MA 09/10/2019
12	ADDITIONAL INFO	MA 28/02/2020

50mm on original

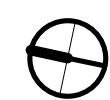
THIS DRAWING ISSUE HAS BEEN REVIEWED FOR

## DEVELOPMENT APPLICATION

APPROVED BY: GA  
CHECKED BY: PH

CONCEPTS AND INFORMATION CONTAINED IN THIS DRAWING ARE COPYRIGHT AND MAY NOT BE REPRODUCED IN WHOLE OR PART OR BY ANY MEDIUM, WITHOUT THE WRITTEN PERMISSION OF JACKSON TEECE. DO NOT SCALE THIS DRAWING. USE FIGURED DIMENSIONS ONLY. VERIFY ALL PROJECT DIMENSIONS BEFORE COMMENCING ON-SITE WORK OR OFF-SITE FABRICATION. NOTIFY JACKSON TEECE OF ANY DISCREPANCIES AND SEEK INSTRUCTIONS.

SCALE 1:200



bluesox

CLIENT  
Bluesox Developments

ELEVATIONS

DATE  
19/10/18

PROJECT No.  
2017134

SCALE @ A1  
As indicated

DISCP. DRAWING No.  
A DA-013

DRAWN  
YH

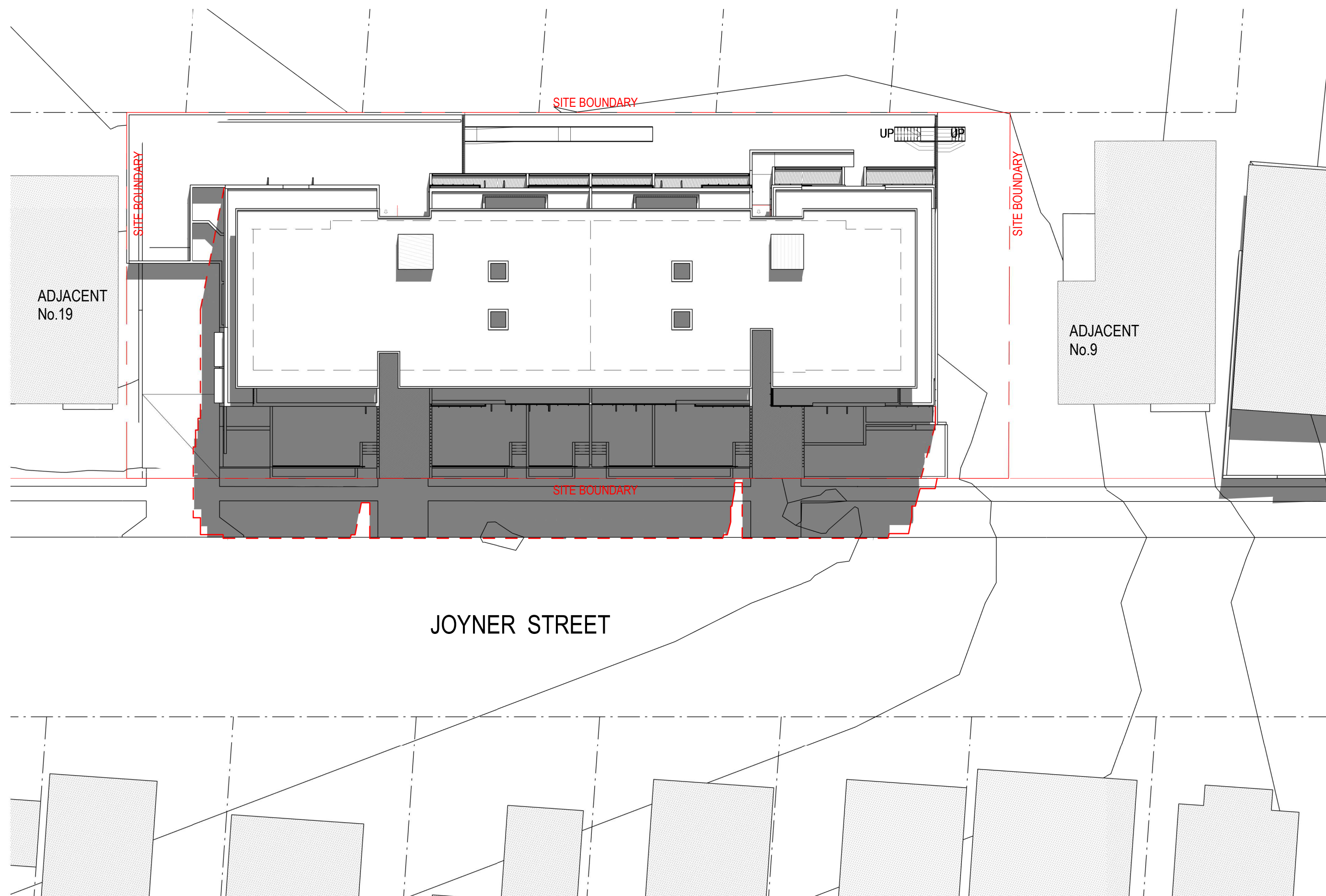
ISSUE  
12

PROJECT  
11-17 JOYNER  
STREET, WESTMEAD

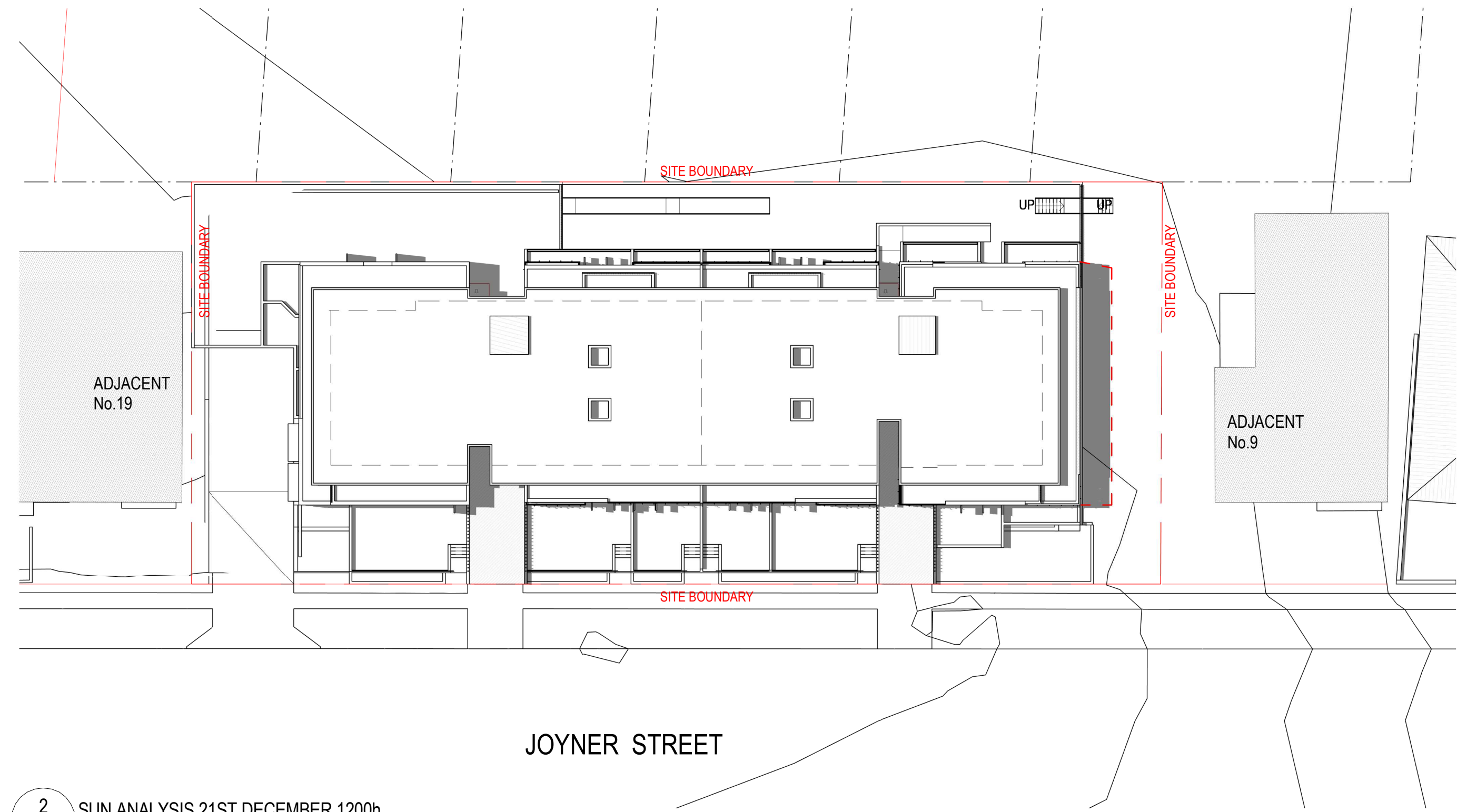
Lot 1, Pier 8-9, 23 Hickson Road  
Walsh Bay New South Wales 2000 Australia  
T 61 2 9290 2722 F 61 2 9290 1150  
E sydney@jacksonteece.com  
Jackson Teece Chesterman Willis Pty Ltd  
Trading as Jackson Teece  
ABN 15 083 837 290  
Nominated Architects: Damian Barker (8192), John Gow (6790), Daniel Hudson (8315)

JACKSON TEECE

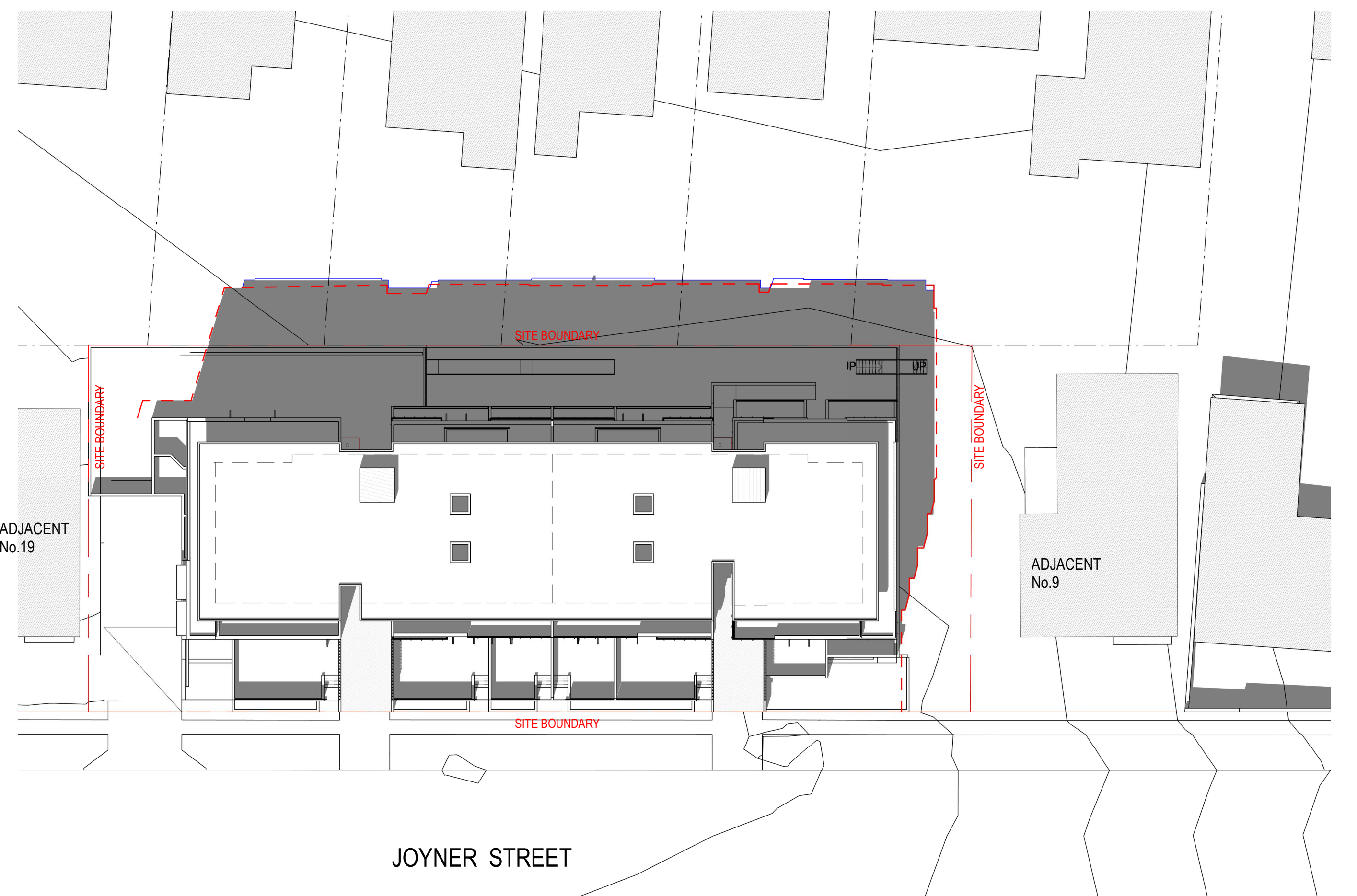




1 SUN ANALYSIS 21ST DECEMBER 0900h



2 SUN ANALYSIS 21ST DECEMBER 1200h



3 SUN ANALYSIS 21ST DECEMBER 1500h

**NOTE:**  
SURROUNDING DWELLINGS LOCATION  
ARE APPROXIMATE ONLY.

#### AMENDMENTS

ISSUE	DESCRIPTION	APPROVED	DATE
1	PRELIMINARY FOR DA	EJ	14/01/2019
2	CONSULTANT COORDINATION	MA	13/02/2019
3	ISSUE FOR LAHC REVIEW	MA	21/02/2019
4	FINAL REVIEW FOR DA	MA	28/02/2019
5	ADDITIONAL INFO	MA	17/01/2020

50mm on original

THIS DRAWING ISSUE HAS BEEN REVIEWED

## DEVELOPMENT APPLICATION

APPROVED BY:  
APR

CHECKED BY:  
CHK

CONCEPTS AND INFORMATION CONTAINED IN THIS DRAWING ARE COPYRIGHT AND MAY NOT BE REPRODUCED IN WHOLE OR PART OR BY ANY MEDIUM, WITHOUT THE WRITTEN PERMISSION OF JACKSON TEECE. DO NOT SCALE THIS DRAWING. USE FIGURED DIMENSIONS ONLY. VERIFY ALL PROJECT DIMENSIONS BEFORE COMMENCING ON-SITE WORK OR OFF-SITE FABRICATION. NOTIFY JACKSON TEECE OF ANY DISCREPANCIES AND SEEK INSTRUCTIONS.

Date generated: 17/01/2020 2:50:02 PM  
C:\REVIT\_LOCAL\2017134-JT-0-SHT-AR-17 UPDATED\_media-nc.rvt

bluesox

CLIENT  
Bluesox Developments

SHADOW DIAGRAMS 21 DEC

DATE 06/02/16	SCALE @ A1 1 : 300	DRAW Author
PROJECT 2017134	DISC A	DRAWING No. DA-016
		ISSU 5

PROJECT  
11-17 JOYNER  
STREET, WESTMEAD

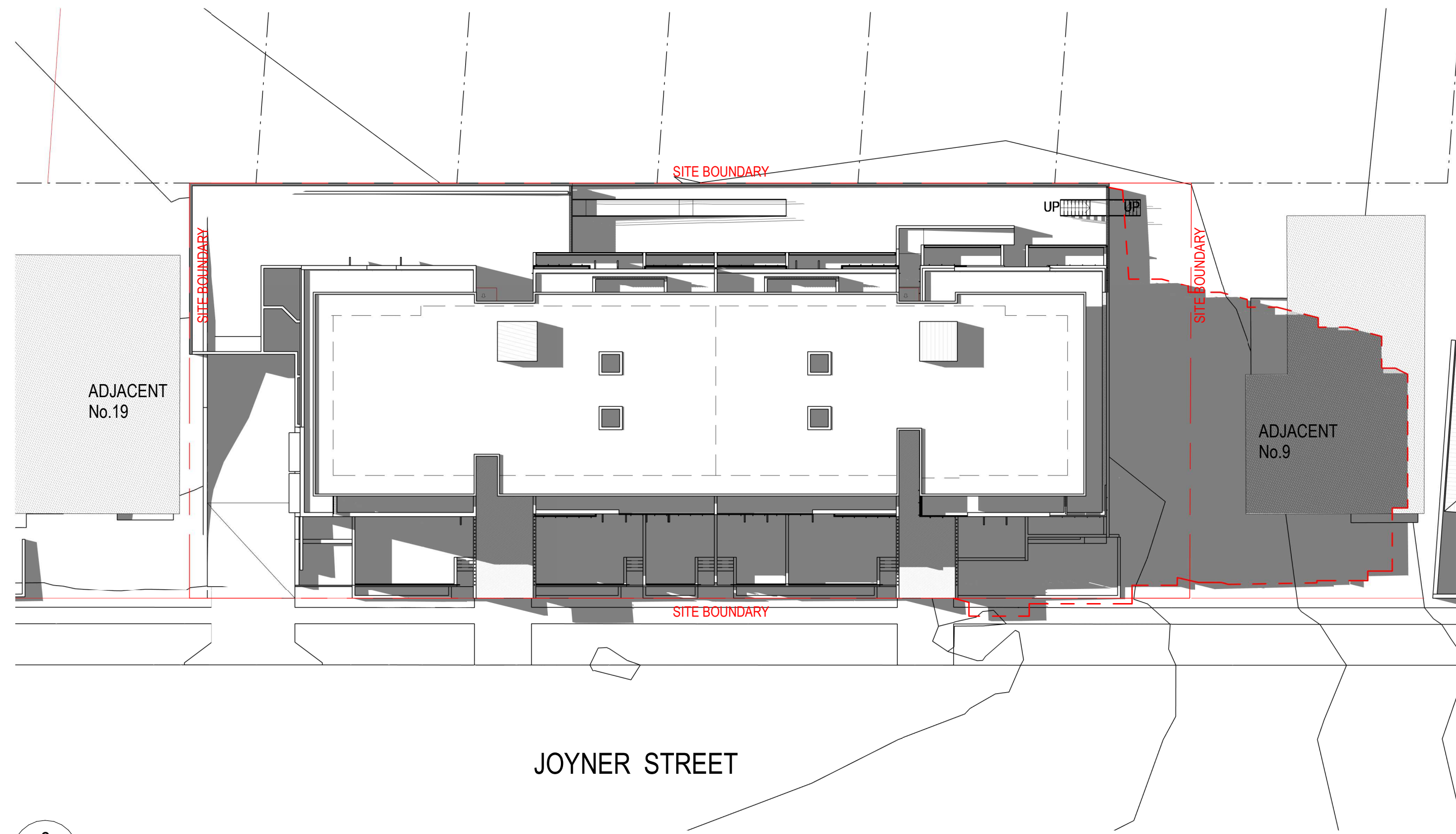
Lot 1, Pier 8-9, 23 Hickson Road  
Walsh Bay New South Wales 2000 Australia  
T 61 2 9290 2722 F 61 2 9290 1150  
E sydney@jacksonteece.com  
Jackson Teece Chesterman Willis Pty Ltd  
Trading as Jackson Teece  
ABN 15 083 837 290  
Nominated Architects: Damian Barker (8192), John Gow (6790), Daniel Hudson (8315)

**JACKSON TEECE**

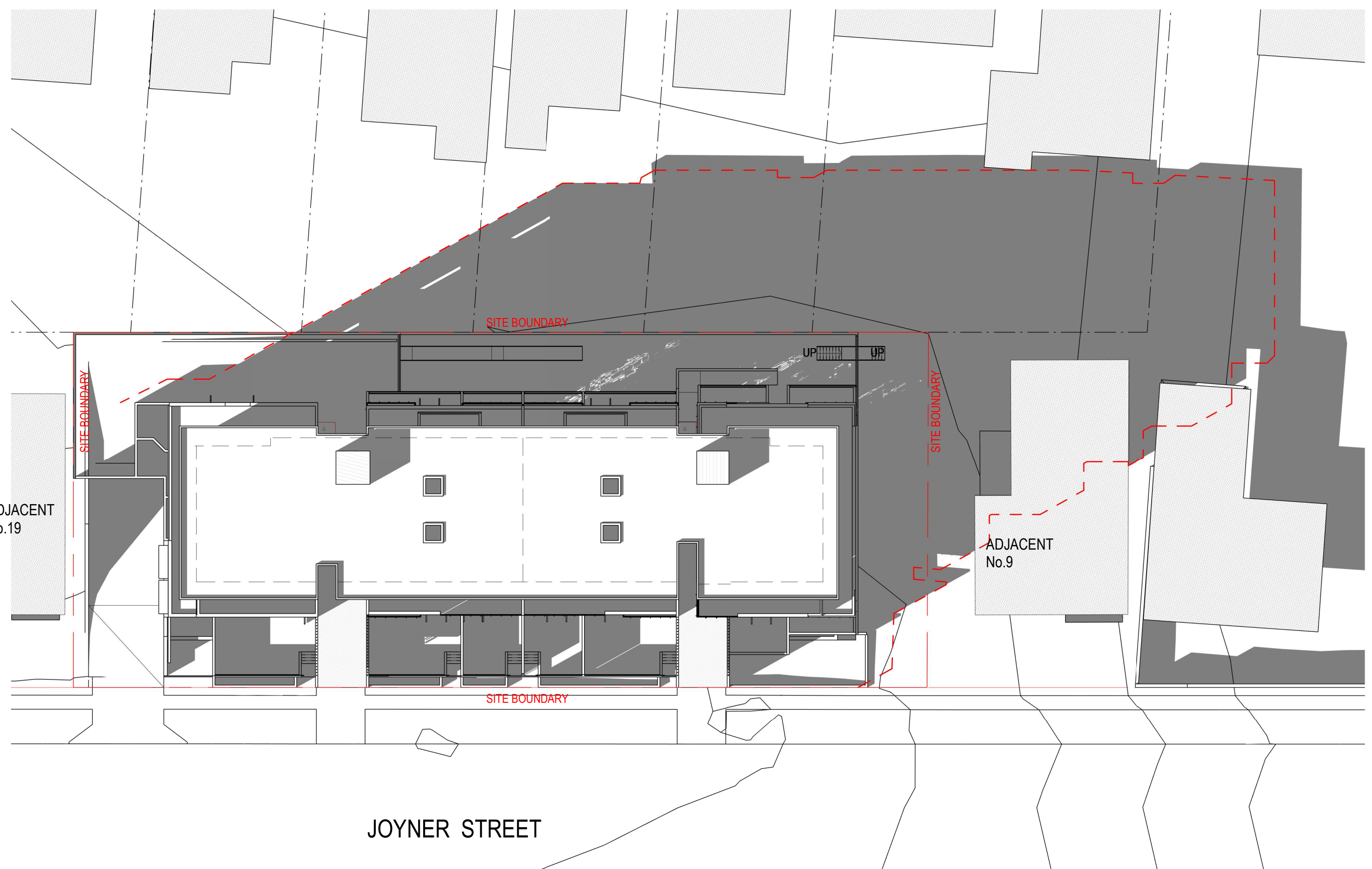




1 SUN ANALYSIS 21ST JUNE 0900h



2 SUN ANALYSIS 21ST JUNE 1200h



3 SUN ANALYSIS 21ST JUNE 1500h

**NOTE:**  
SURROUNDING DWELLINGS LOCATION  
ARE APPROXIMATE ONLY.

#### AMENDMENTS

ISSUE	DESCRIPTION	APPROVED	DATE
1	PRELIMINARY FOR DA	EJ	14/01/2019
2	CONSULTANT COORDINATION	MA	13/02/2019
3	ISSUE FOR LAHC REVIEW	MA	21/02/2019
4	FINAL REVIEW FOR DA	MA	28/02/2019
5	ADDITIONAL INFO	MA	17/01/2020

50mm on original

THIS DRAWING ISSUE HAS BEEN REVIEWED

## DEVELOPMENT APPLICATION

APPROVED BY:  
APR

CHECKED BY:  
CHK

CONCEPTS AND INFORMATION CONTAINED IN THIS DRAWING ARE COPYRIGHT AND MAY NOT BE REPRODUCED IN WHOLE OR PART OR BY ANY MEDIUM, WITHOUT THE WRITTEN PERMISSION OF JACKSON TEECE. DO NOT SCALE THIS DRAWING. USE FIGURED DIMENSIONS ONLY. VERIFY ALL PROJECT DIMENSIONS BEFORE COMMENCING ON-SITE WORK OR OFF-SITE FABRICATION. NOTIFY JACKSON TEECE OF ANY DISCREPANCIES AND SEEK INSTRUCTIONS.

Date generated: 17/01/2020 2:55:08 PM  
C:\REVIT\_LOCAL\2017134-JT-0-SHT-AR-17 UPDATED\_media-nc.rvt

bluesox

CLIENT  
Bluesox Developments

SHADOW DIAGRAMS 21 JUN

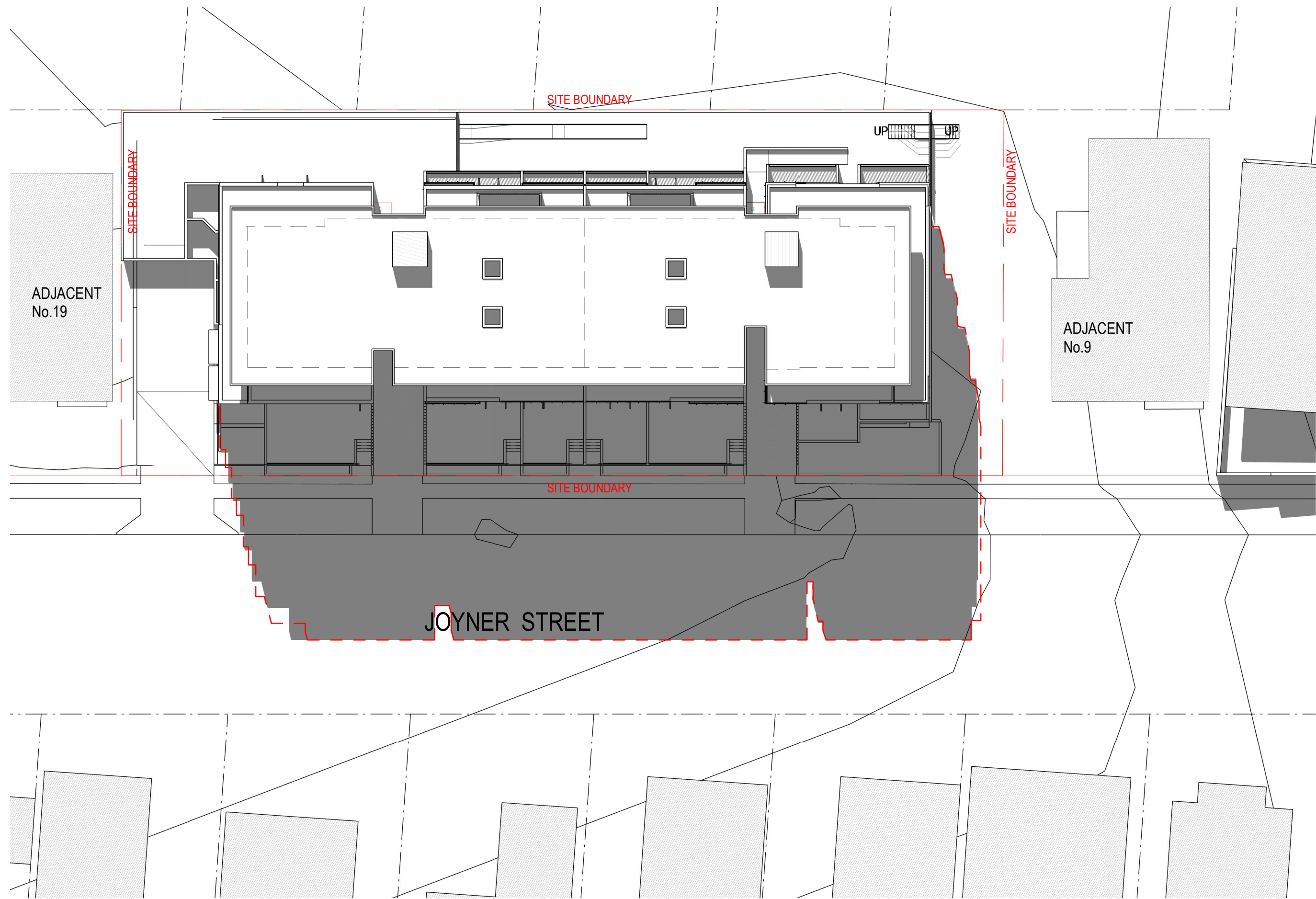
DATE	SCALE @ A1	DRAW
06/02/16	1 : 300	Author
PROJECT	DISC	DRAWING No.
2017134	A	DA-017
ISSU	5	

PROJECT  
11-17 JOYNER  
STREET, WESTMEAD

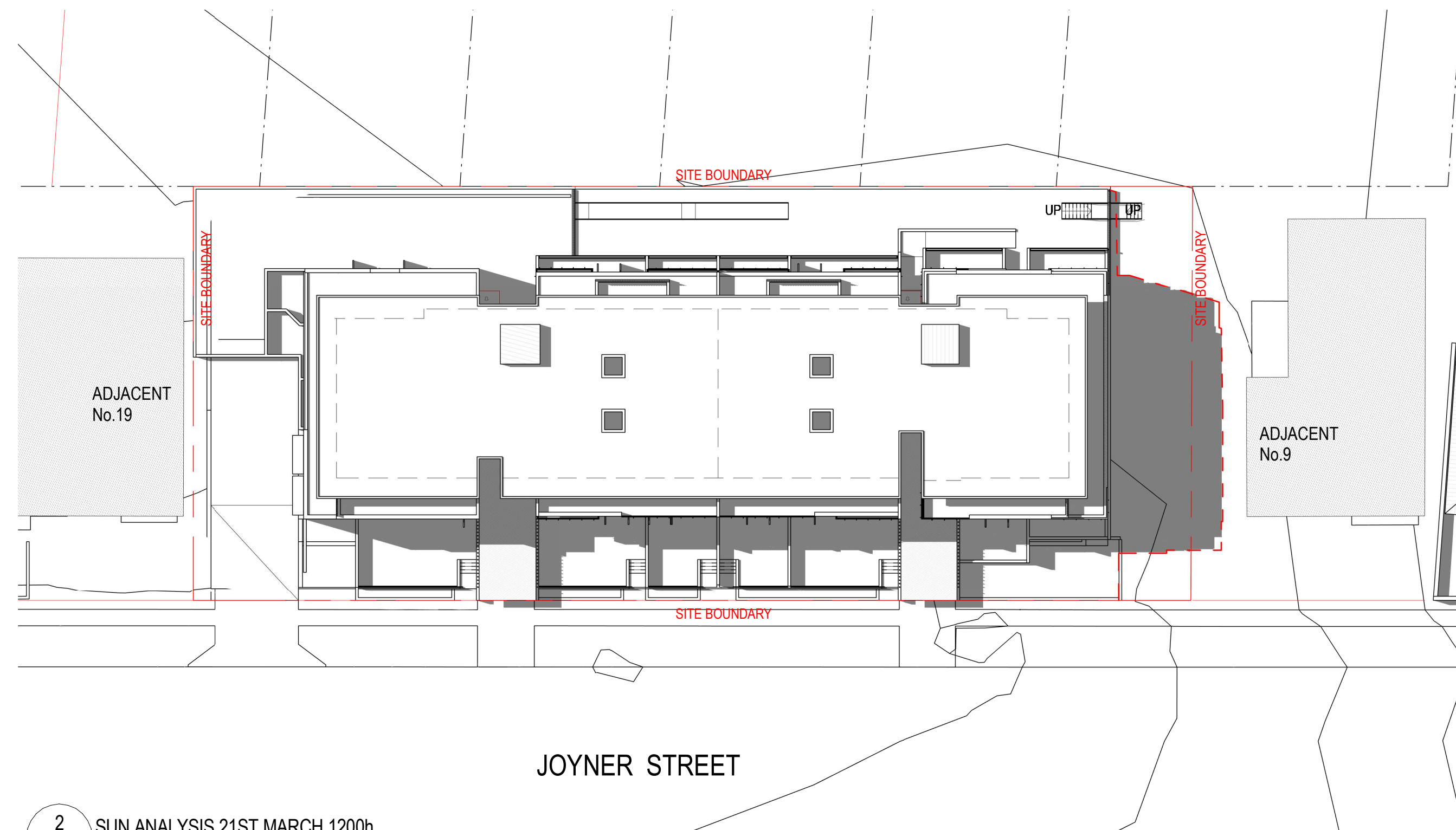
Lot 1, Pier 8-9, 23 Hickson Road  
Walsh Bay New South Wales 2000 Australia  
T 61 2 9290 2722 F 61 2 9290 1150  
E sydney@jacksonteece.com  
Jackson Teece Chesterman Willis Pty Ltd  
Trading as Jackson Teece  
ABN 15 083 837 290  
Nominated Architects: Damian Barker (8192), John Gow (6790), Daniel Hudson (8315)

**JACKSON TEECE**





1 SUN ANALYSIS 21ST MARCH 0900h



2 SUN ANALYSIS 21ST MARCH 1200h



3 SUN ANALYSIS 21ST MARCH 1500h  
SCALE 1 : 300

**NOTE:**  
SURROUNDING DWELLINGS LOCATION  
ARE APPROXIMATE ONLY.

#### AMENDMENTS

ISSUE	DESCRIPTION	APPROVED	DATE
1	PRELIMINARY FOR DA	EJ	14/01/2019
2	CONSULTANT COORDINATION	MA	13/02/2019
3	ISSUE FOR LAHC REVIEW	MA	21/02/2019
4	FINAL REVIEW FOR DA	MA	28/02/2019
5	ADDITIONAL INFO	MA	17/01/2020

50mm on original

THIS DRAWING ISSUE HAS BEEN REVIEWED

## DEVELOPMENT APPLICATION

APPROVED BY:  
APR

CHECKED BY:  
CHK

CONCEPTS AND INFORMATION CONTAINED IN THIS DRAWING ARE COPYRIGHT AND  
MAY NOT BE REPRODUCED IN WHOLE OR PART OR BY ANY MEDIUM, WITHOUT THE  
WRITTEN PERMISSION OF JACKSON TEECE. DO NOT SCALE THIS DRAWING. USE  
FIGURED DIMENSIONS ONLY. VERIFY ALL PROJECT DIMENSIONS BEFORE  
COMMENCING ON-SITE WORK OR OFF-SITE FABRICATION. NOTIFY JACKSON TEECE  
OF ANY DISCREPANCIES AND SEEK INSTRUCTIONS.

Date generated: 17/01/2020 2:50:24 PM  
C:\REVIT\_LOCAL\2017134-JT-0-SHT-AR-17 UPDATED\_media-nc.rvt

bluesox

CLIENT  
Bluesox Developments

SHADOW DIAGRAMS 21 MAR

DATE	SCALE @ A1	DRAW
06/02/16	1 : 300	Author
PROJECT	DISC	DRAWING No.
2017134	A	DA-018
ISSU		5

PROJEC  
11-17 JOYNER  
STREET, WESTMEAD

Lot 1, Pier 8-9, 23 Hickson Road  
Walsh Bay New South Wales 2000 Australia  
T 61 2 9290 2722 F 61 2 9290 1150  
E sydney@jacksonteece.com  
Jackson Teece Chesterman Willis Pty Ltd  
Trading as Jackson Teece  
ABN 15 083 837 290  
Nominated Architects: Damian Barker (8192), John Gow (6790), Daniel Hudson (8315)

**JACKSON TEECE**